

# BUILDING A QUALITY AUSTRALIAN GOLD BUSINESS



MARK CLARK  
MANAGING DIRECTOR

AUGUST 2013

# DISCLAIMER & COMPETENT PERSON STATEMENT

This presentation contains only a brief overview of Regis Resources Limited and its associated entities ("Regis or RRL") and their respective activities and operations. The contents of this presentation, including matters relating to the geology of Regis' projects, may rely on various assumptions and subjective interpretations which it is not possible to detail in this presentation and which have not been subject to any independent verification.

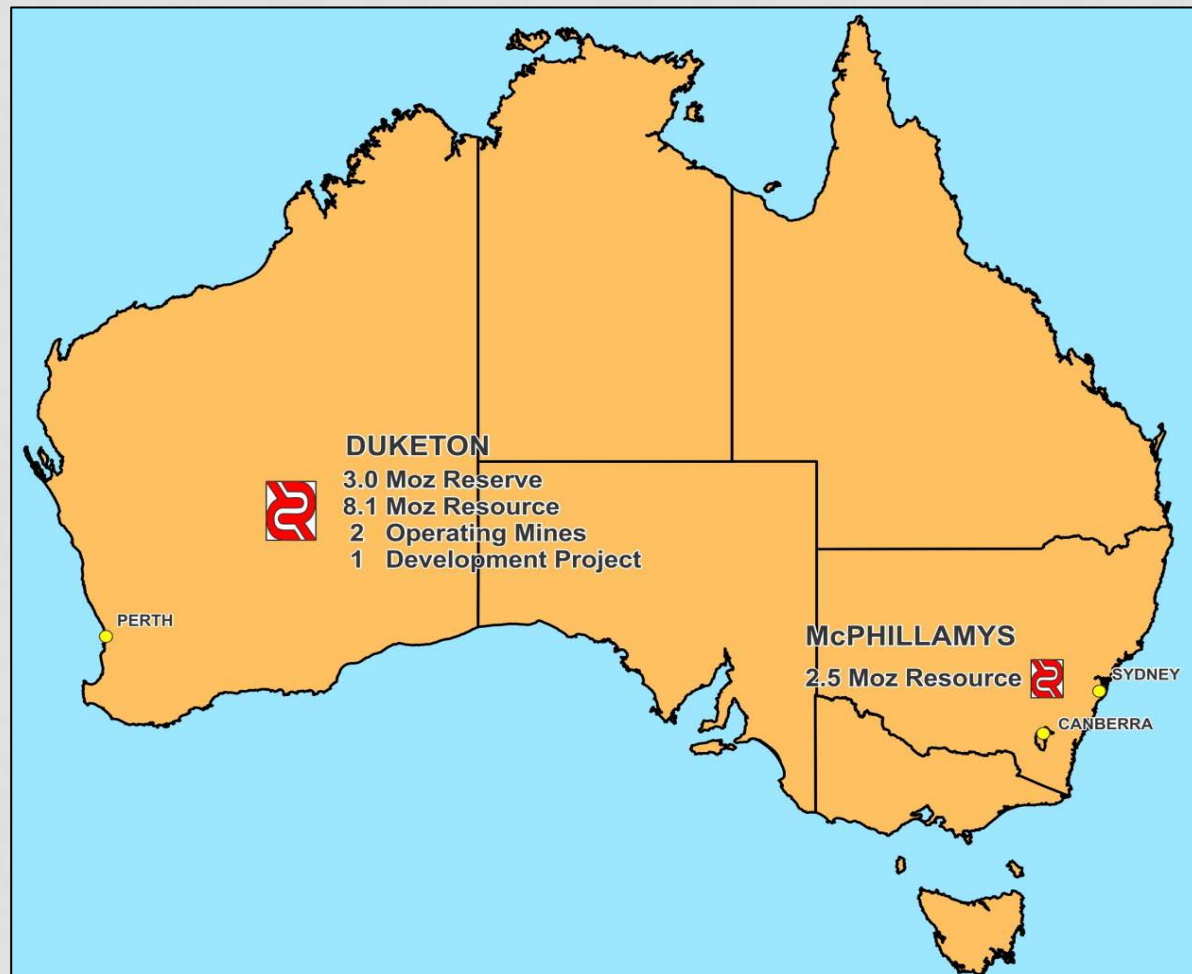
This presentation contains a number of forward-looking statements. Known and unknown risks and uncertainties, and factors outside of Regis' control, may cause the actual results, performance and achievements of Regis to differ materially from those expressed or implied in this presentation.

To the maximum extent permitted by law, Regis does not warrant the accuracy, currency or completeness of the information in this presentation, nor the future performance of Regis, and will not be responsible for any loss or damage arising from the use of the information.

The information contained in this presentation is not a substitute for detailed investigation or analysis of any particular issue. Current and potential investors and shareholders should seek independent advice before making any investment decision in regard to Regis or its activities.

The technical information in this presentation has been reviewed and approved by Mr Morgan Hart who is a member of the Australasian Institute of Mining and Metallurgy. Mr Hart has sufficient experience which is relevant to the style of mineralisation and type of deposit under consideration and to the activity which he is undertaking to qualify as a Competent Person as defined in the 2004 edition of the 'Australasian Code for the Reporting of Exploration Results, Mineral Resources and Ore Reserves'. Morgan Hart is a director and full time employee of Regis Resources Ltd and consents to the inclusion in the report of the matters based on his information in the form and context in which it appears.

# PURELY AUSTRALIAN GOLD MINER



- Projects 100% Regis owned
- 10.6Moz of resources<sup>1</sup>
- 3.0Moz of reserves<sup>1</sup>
- 2 operating mines
- 1 development project
- 300kozpa ramping to >400koz
- Strong growth pipeline
- Exclusively in Australia – low political risk

Note 1 – full breakdown of these reserves and resources in accordance with JORC is set out in Appendix 1 & 2 to this presentation

# CORPORATE OVERVIEW

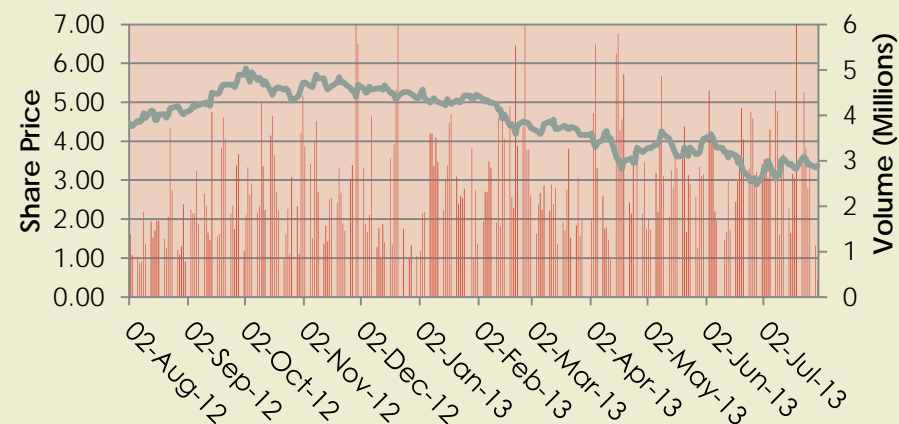
## Corporate Information

ASX Code	RRL
Shares	496m
Last price	\$3.52
Market capitalisation	\$1.74bn
Listed options	2.6m
Unlisted options	5.1m

## Board of Directors

Mark Clark	CEO
Morgan Hart	COO
Nick Giorgetta	Chairman
Mark Okeby & Ross Kestel	NED

## Share Price & Volume



## Major shareholders

Newmont	19%
Directors & management	11%
JCP Investment Partners	8%
Other Australian Institutions	17%
North American Institutions	12%

# BALANCE SHEET

## Cash

Cash & bullion (Jun13)	\$80.8m
------------------------	---------

## Cash-flow (FY 30/6/2013)

Operating cashflow	\$258.2m* (\$960/oz)
--------------------	----------------------

\* Inclusive of movement in gold bullion on hand

## Major cash outflows (HY ended 31/12/2012)

Full repayment of debt	\$30m
------------------------	-------

GW & Rosemont construction & dev	\$106m
----------------------------------	--------

## Dividend

Targeting 15cps\*

\* Subject to variables outlined in ASX announcements of 28/11/12 and 4/7/13

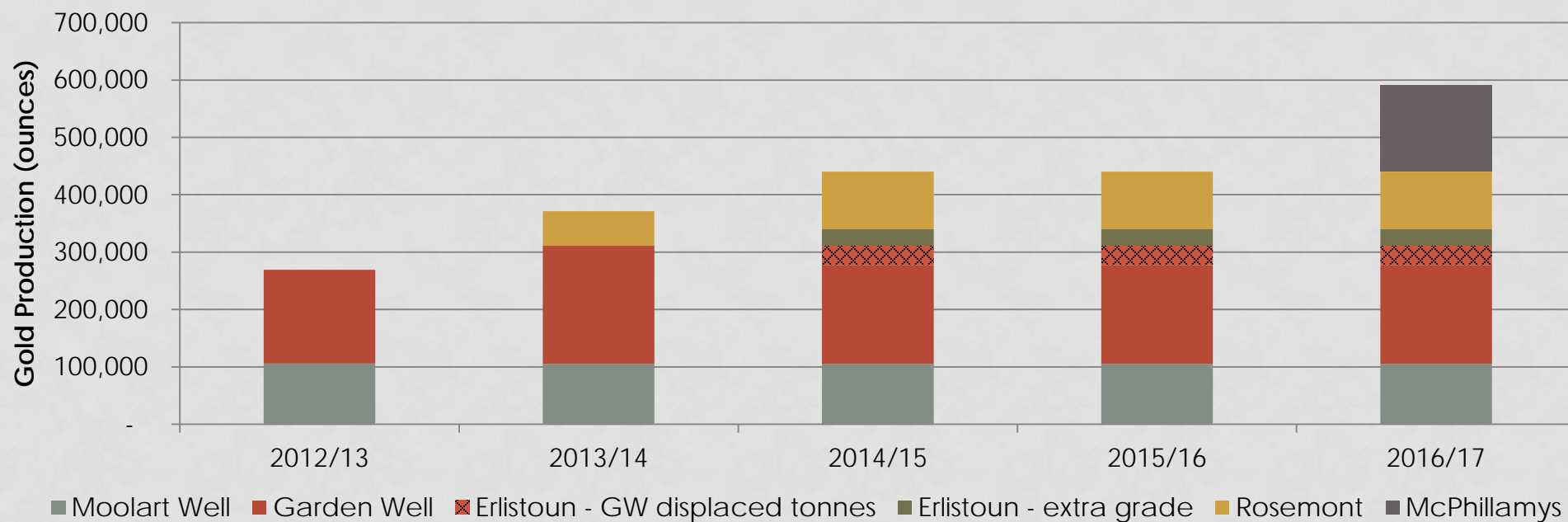
## Gold Hedging (Jun 13)

Total (4% of JORC reserves)	123koz
-----------------------------	--------

- FF 117oz at \$1,426/oz (12koz per quarter 2012-14)

- SD 6koz at \$1,475/oz

# GOLD PRODUCTION OUTLOOK



## PROJECT STATUS

- Moolart Well – producing since 2010
- Garden Well – Dec12 first full quarter of operations
- Rosemont – commissioning stage 1 - Sept13 qtr, stage 2 - Jun 14 qtr.
- Eristoun – satellite mine due to commence FY2015
- McPhillamys – medium term development

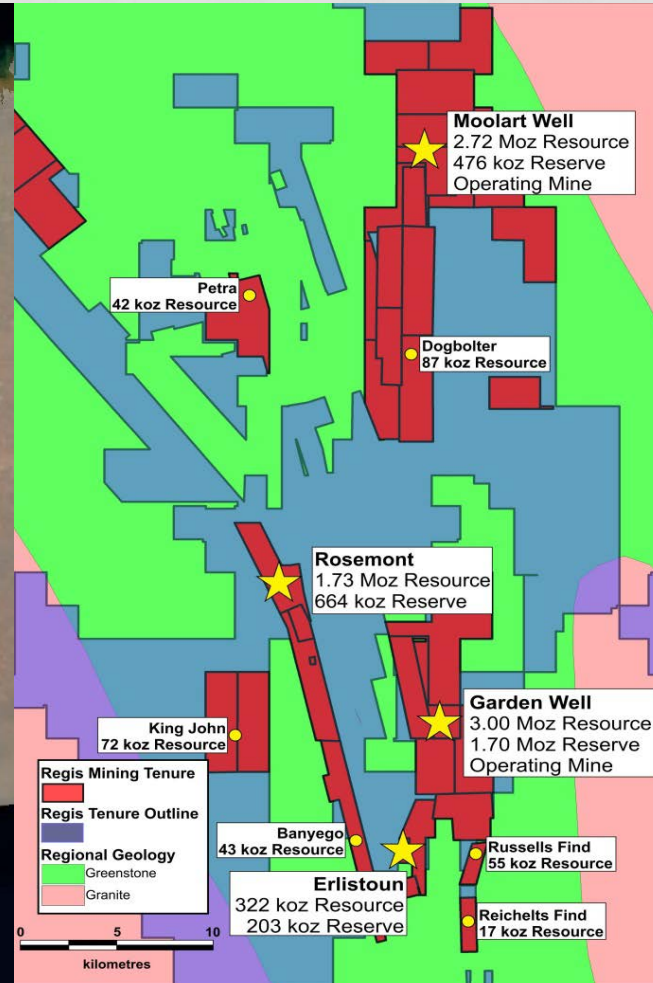
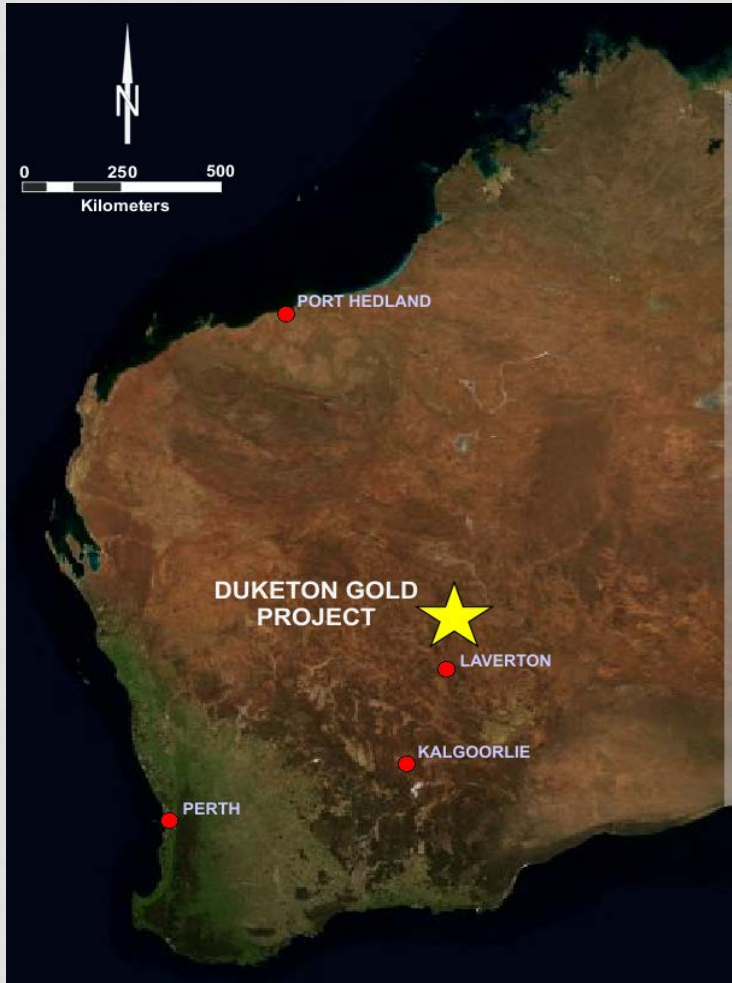
**Significant organic production growth**



# DUKETON GOLD PROJECT



# DUKETON PROJECT OVERVIEW



- 350km north-north east of Kalgoorlie
- 100% Regis owned
- 236 granted leases
- 1,282 km<sup>2</sup> of ground
- 8.1Moz of resources<sup>1</sup>
- 3.0Moz of reserves<sup>1</sup>

Note 1 – full breakdown of these reserves and resources in accordance with JORC is set out in Appendix 1 & 2 to this presentation





# ORE RESERVES<sup>1</sup>

	Total			Forecast LOM Opex (A\$/oz) <sup>2</sup>	Status
	MT	g/t	Koz		
<b>Garden Well</b>	<b>41.7</b>	<b>1.27</b>	<b>1,700</b>	<b>684</b>	<b>Operating</b>
<b>Moolart Well</b>					
- Laterites	6.8	1.31	285		Operating
- Oxide	4.2	1.41	191		Operating
<b>MW Total</b>	<b>11.0</b>	<b>1.36</b>	<b>476</b>	<b>580</b>	
<b>Erlistoun</b>	<b>2.7</b>	<b>2.36</b>	<b>203</b>	<b>608</b>	<b>Mine plan</b>
<b>Rosemont</b>	<b>12.0</b>	<b>1.72</b>	<b>664</b>	<b>640</b>	<b>Development</b>
<b>Total</b>	<b>67.4</b>	<b>1.40</b>	<b>3,043</b>		

Note: 1. full breakdown in accordance with JORC in Appendix 1. 2. before royalties

# JUNE 2013 QUARTER

## Gold Production

Ounces	72,134
--------	--------

Cost per ounce	A\$668*
----------------	---------

\* Pre royalties

## Gold Sales

Ounces	76,313
--------	--------

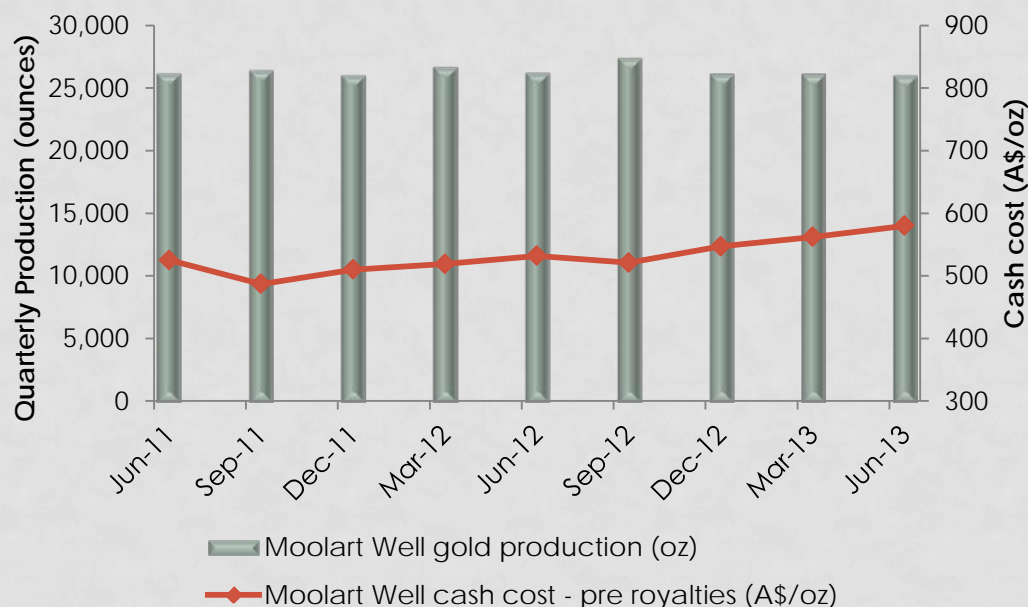
Sale price	A\$1,563
------------	----------

## Cashflow from Operations

Operating cashflow	A\$63.5m
--------------------	----------

## MOOLART WELL

- Plant commissioned August 2010
  - Jun13 quarter 26,031 oz at A\$580/oz<sup>1</sup>
  - Mill throughput >25% above design
  - ≈ 1yr ore supply grade controlled in pit
  - Negligible ongoing capex
- Reliable, low cost production generating strong cash-flow**



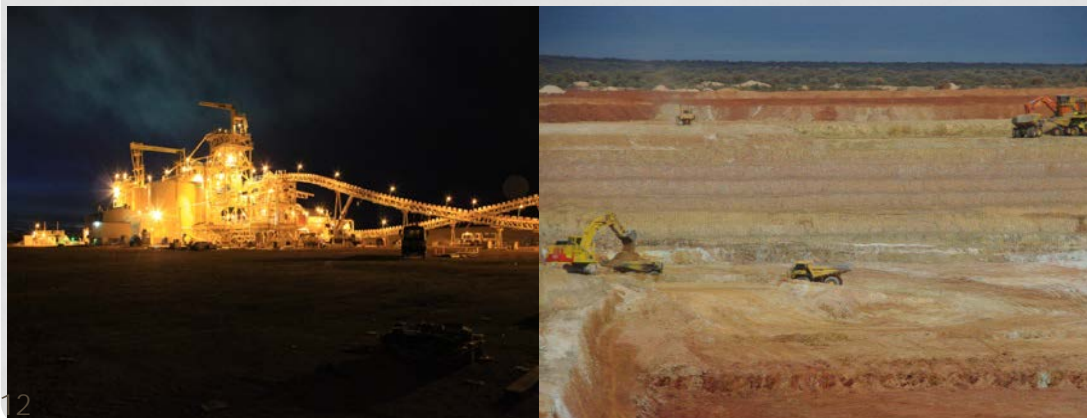
Stage	Producing
Mine type	Open pit
Mineralisation	Laterite & oxide
Plant type	Crush, grind, CIL
Throughput	2.6mtpa
Average grade	1.4g/t gold
Recovery	>92%
FY13 production	105koz
FY13 cash cost	A\$562/oz <sup>1</sup>
Mine life	5 years
Ore reserves	476koz <sup>2</sup>
Mineral resources	2.7Moz <sup>2</sup>

**Note** 1 pre royalty cash cost. 2 full breakdown in Appendix 1 & 2

## GARDEN WELL

- 30km south of Moolart Well
- Virgin discovery by Regis in late 2009
- Still exploring at depth
- Plant commissioned in Sept 12 quarter
- Capex \$112m for 4mtpa plant
- Nameplate 4mtpa – current  $\approx$  5.5mtpa
- Production Jun 13 qtr – 46koz at \$718/oz
- Production y/e Jun 13 – 163koz at \$562/oz
- Jul13 reserve increase 1.39Moz to 1.70Moz

Stage	Production
Mine type	Open pit
Mineralisation	Mixed ultramafic-sediment shear
Plant type	Crush, grind, CIL
Throughput	>5mtpa
Reserve grade	1.27g/t gold
Recovery	92-95%
Mine life	7 years
LOM forecast p.a. gold production	200-220 koz pa @ \$682/oz <sup>1</sup>
Ore reserves	1.70Moz <sup>2</sup>
Mineral resources	3.0Moz <sup>2</sup>

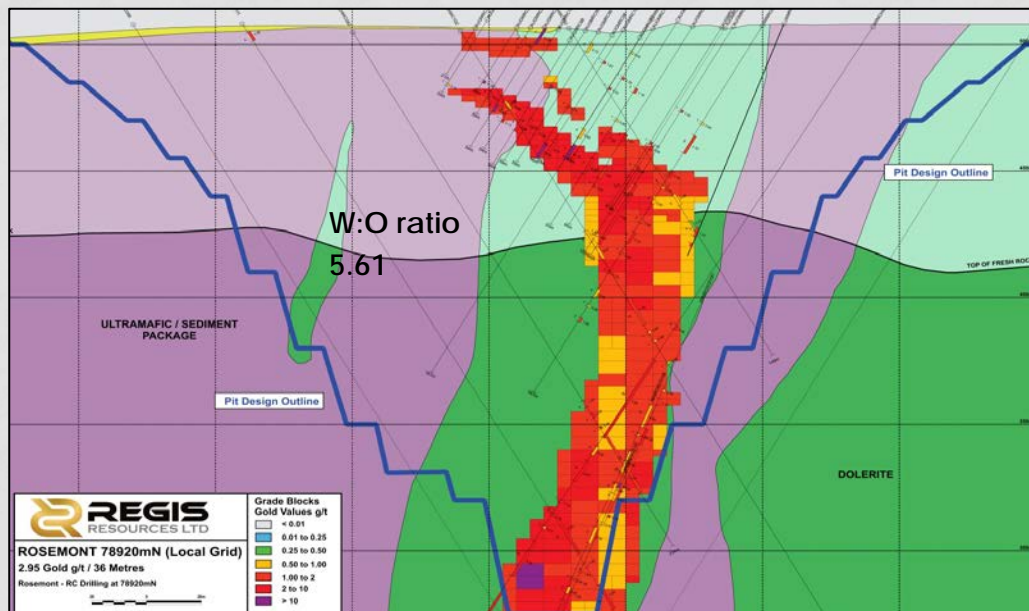


**Note** 1 pre royalty cash cost. 2 full breakdown in Appendix 1 & 2



## ROSEMONT

- Project development - crush & grind at pit and pump ore slurry to Garden Well (9km)
- Stage 1 underway (1.5mtpa capacity)
  - Construction budget ≈ A\$50m (spent \$27m)
  - Prodn late Sept13 qtr, 80kozpa
- Stage 2 to follow (2mtpa capacity)
  - Construction budget ≈ A\$20m
  - Prodn in June14 qtr ramping to 100kozpa

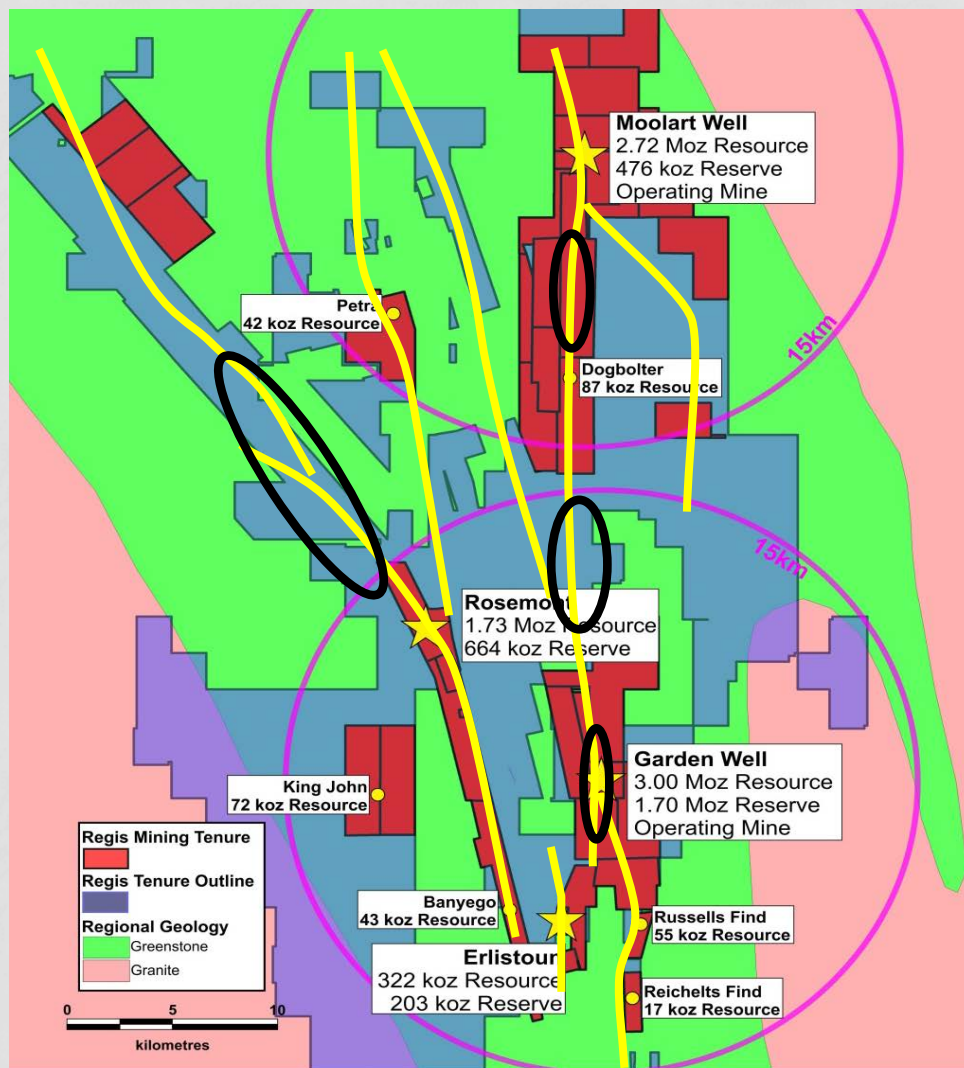


Stage	DFS
Mine type	Open pit
Mineralisation	Quartz hosted stockwork
Plant type	Crush, grind, pump
Throughput	1.5 - 2.0mtpa
Reserve grade	1.73g/t gold
Recovery	95%
LOM production	80 – 100kozpa
LOM cash cost	A\$640/oz <sup>1</sup>
Mine life	8 years
Ore reserves	664koz <sup>2</sup>
Mineral resources	1.7Moz <sup>2</sup>

### Notes

1 forecast pre royalty cash cost. 2 full breakdown in Appendix 1 & 2

## REGIONAL EXPLORATION

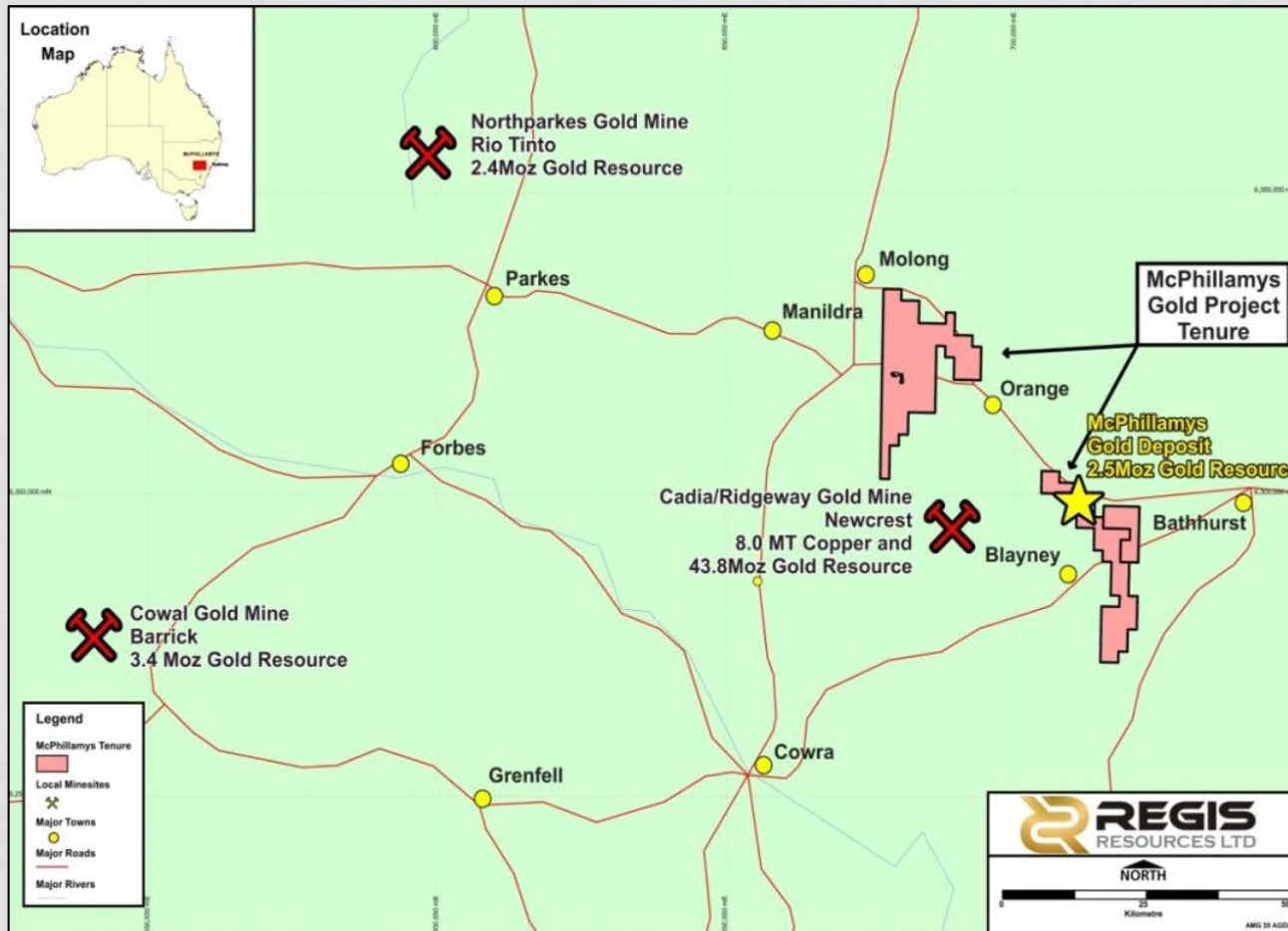


- MW & GW - gold mineralisation under paleochannel cover
- Testing theory regionally
- Targeting areas:
  - Max 30m of paleochannel cover
  - No previous effective drilling

**Scope for further discovery**

► value - 3 mills in district

# McPHILLAMYS GOLD PROJECT



- Acquisition completed Nov12
- 250km west of Sydney
- 35km from each of Orange & Bathurst
- 3 granted leases
- 420 km<sup>2</sup> of ELs
- Project covered by freehold farmland (some to be acquired by Regis)
- 2.5Moz of resources







# PRE-FEASIBILITY FOCUS

- Drilling and resource/reserve estimation
- Metallurgical testing
  - Complete testing to DFS level
  - Investigate flow sheet options to improve base case recovery of 85%
- Investigate water and power options
- Start licensing process
- Land acquisitions



# TARGET DEVELOPMENT TIMELINE

	2013	2014	2015	2016	2017
Resource drill-out and reserve estimation					
Pre-feasibility studies & other logistics					
DFS					
Construction & development					
Gold production					

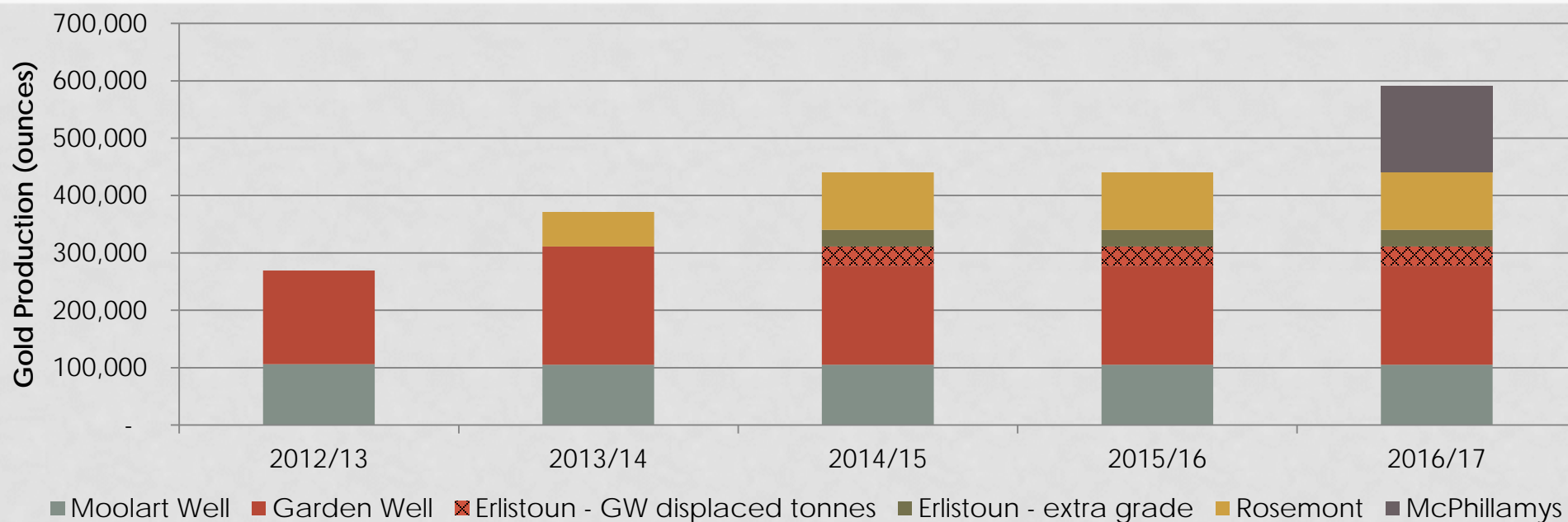


# TARGET PROJECT

- Open pit mining
- Carbon in Leach processing (as per Duketon)
- Circa 4 million tonnes per annum plant
- 140 – 160kozpa gold production over a minimum 10 year mine life
- Target capex – Regis norm +/- 15%
- Target 2<sup>nd</sup> quartile cash costs

**McPhillamys is an excellent medium term development opportunity**

# REGIS IN SUMMARY



- Current business generating strong cash-flow – targeting maiden dividend
- Organic, fully funded growth to 400koz pa
- Low cash cost, negligible sustaining capex
- McPhillamys provides medium term development pipeline
- Significant resource growth and exploration opportunities

**High quality Australian growth gold business**



# APPENDIX 1

## JORC RESERVES

Project	Proven			Probable			Total			Cut-off Grade g/t
	MT	grade g/t	gold koz	MT	grade g/t	gold koz	MT	grade g/t	gold koz	
<b>Garden Well</b>				<b>41.7</b>	<b>1.27</b>	<b>1,700</b>	<b>41.7</b>	<b>1.27</b>	<b>1,700</b>	<b>0.60</b>
<b>Moolart Well</b>										
Laterite	6.1	1.35	263	0.7	0.98	22	6.8	1.31	285	0.50
Oxide, trans & fresh	0.8	1.44	37	3.3	1.41	149	4.1	1.41	186	0.40/ 0.50
Stockpiles	0.1	1.49	5				0.1	1.49	5	0.5
<b>Total Moolart Well</b>	<b>7.0</b>	<b>1.36</b>	<b>305</b>	<b>4.0</b>	<b>1.36</b>	<b>171</b>	<b>11.0</b>	<b>1.36</b>	<b>476</b>	
<b>Erlistoun</b>	<b>1.3</b>	<b>2.34</b>	<b>95</b>	<b>1.4</b>	<b>2.37</b>	<b>108</b>	<b>2.7</b>	<b>2.36</b>	<b>203</b>	<b>0.70</b>
<b>Rosemont</b>				<b>12.0</b>	<b>1.72</b>	<b>664</b>	<b>12.0</b>	<b>1.72</b>	<b>664</b>	<b>0.50</b>
<b>Total Reserves</b>	<b>8.3</b>	<b>1.51</b>	<b>400</b>	<b>59.1</b>	<b>1.39</b>	<b>2,643</b>	<b>67.4</b>	<b>1.40</b>	<b>3,043</b>	

- Note 1 - Tonnes and Ounces are rounded, rounding errors may occur. Note 2 - reserves quoted at 30/6/12 other than Rosemont (January 2013) and Garden Well (net of mining May 2013). MT = million tonnes, g/t = gold grade in grams per tonne, koz = thousands of ounces

# APPENDIX 2

## JORC RESOURCES

Project	Measured			Indicated			Inferred			Total Resources			Cut-off Grade g/t
	MT	g/t	gold koz	MT	g/t	gold koz	MT	g/t	gold koz	MT	g/t	gold koz	
<b>Moolart Well</b>													
Laterite	6.4	1.35	279	1.0	0.90	29	0.3	0.88	8	7.7	1.28	316	0.50
Oxide/trans	1.1	1.30	48	15.3	0.96	476	23.4	0.78	588	39.8	0.87	1,112	0.40
Fresh				0.3	1.68	14	4.1	1.48	196	4.4	1.49	210	1.00
Low Grade	3.0	0.42	40	17.7	0.48	273	48.5	0.49	767	69.2	0.49	1080	0.3
Stockpiles	0.1	1.49	5							0.1	1.49	5	0.5
<b>Total Moolart Well</b>	<b>10.6</b>	<b>1.08</b>	<b>372</b>	<b>34.3</b>	<b>0.72</b>	<b>792</b>	<b>76.3</b>	<b>0.64</b>	<b>1,559</b>	<b>121.2</b>	<b>0.70</b>	<b>2,723</b>	
<b>Garden Well</b>				<b>76.1</b>	<b>1.09</b>	<b>2,656</b>	<b>10.4</b>	<b>1.02</b>	<b>341</b>	<b>86.5</b>	<b>1.08</b>	<b>2,998</b>	<b>0.50</b>
<b>Erlistoun</b>	<b>2.3</b>	<b>1.92</b>	<b>143</b>	<b>3.0</b>	<b>1.88</b>	<b>179</b>				<b>5.3</b>	<b>1.90</b>	<b>322</b>	<b>0.50</b>
<b>Rosemont</b>				<b>18.9</b>	<b>1.64</b>	<b>996</b>	<b>14.3</b>	<b>1.6</b>	<b>737</b>	<b>33.2</b>	<b>1.62</b>	<b>1,733</b>	<b>0.50</b>
<b>Satellite Deposits</b>													
Dogbolter							0.9	2.91	87	0.9	2.91	87	1.00
King John							0.7	3.18	72	0.7	3.18	72	1.00
Russells Find							0.4	3.84	55	0.4	3.84	55	1.00
Baneygo							0.8	1.70	43	0.8	1.70	43	0.50
Reichelts Find				0.1	3.69	17				0.1	3.69	17	1.00
Petra							0.4	3.12	42	0.4	3.12	42	2.00
<b>Total Satellite Deposits</b>				<b>0.1</b>	<b>3.69</b>	<b>17</b>	<b>3.2</b>	<b>2.83</b>	<b>299</b>	<b>3.3</b>	<b>2.87</b>	<b>316</b>	
<b>McPhillamys</b>				<b>41.3</b>	<b>1.27</b>	<b>1,685</b>	<b>16.1</b>	<b>1.57</b>	<b>815</b>	<b>57.4</b>	<b>1.36</b>	<b>2,500</b>	
<b>Total</b>	<b>12.9</b>	<b>1.24</b>	<b>515</b>	<b>173.7</b>	<b>1.13</b>	<b>6,325</b>	<b>120.3</b>	<b>0.97</b>	<b>3,751</b>	<b>306.9</b>	<b>1.07</b>	<b>10,592</b>	
<b>Regis share</b>												<b>10,570</b>	

- Note 1 - Tonnes and Ounces are rounded, rounding errors may occur. MT = million tonnes, g/t = gold grade in grams per tonne, koz = thousands of ounces
- Note 2 – all resources quoted at 30/6/12 other than McPhillamys (at acquisition date November 2012) Rosemont (January 2013) and Garden Well (net of mining to May 2013)